



Volume 5, Issue 2

Spring 2008

MARY AND JOHN
GRAY LIBRARY

FROM THE STACKS

INTERLIBRARY LOAN SERVICE IS NOW WEB-BASED

On March 18 the library began using the web-based ILLiad interlibrary loan service. This service allows users to submit their requests online, track the status of their requests, receive electronically delivered documents and change their profiles from any web browser.

How does this affect library users?

The main change is the replacement of the paper request forms with a totally electronic system. All users, students, faculty, and staff at Lamar University and LIT will have to register with the system before their initial use of the ILLiad system. Once registered users can make their requests and track them.

To request an item through Interlibrary Loan, you must first identify yourself to our library's ILLiad interlibrary loan system. To do this you fill out a registration form using your Web browser.

Registration has three purposes:

1. Entering your personal information into the ILLiad interlibrary loan system means you will not have to supply the information again when making future requests.
2. Having your e-mail and regular mail addresses on file with the Interlibrary Loan office enables us to notify you promptly and deliver materials accurately when your request arrives in the library.

3. By logging in with your Lamar ID (students only) or your library barcode number (faculty and staff only) and a password of your choice, you will have secure access to information about your requests. You will also be able to review the list of items you have requested in the past.

How do I register?

On the library home page <http://library.lamar.edu> go to **Services** and click on **Interlibrary Loan**. On the ILL page click on **ILL registration for first time users**. Students must use their 8 digit Lamar ID number, faculty and staff must use their 13 digit barcode number. If you do not know your number, bring your Lamar ID to the Circulation Desk on the first floor. You select your own password.

Questions?

If you have questions regarding this service contact the Interlibrary Loan office 880-8987 Monday –Friday 8am-5pm or via email ill@library.lamar.edu. After hours call the Reference Desk at 880-1898.

Kim Wiley
Web Support Analyst
kim.wiley@lamar.edu

INSIDE THIS ISSUE:

<i>From the Interim Dean</i>	2
<i>Digital Discovery 2008</i>	3
<i>Overdue Notices via Email</i>	3
<i>What's Happening in the Library</i>	4-5
<i>National Library Week</i>	4
<i>Library Course Offerings</i>	5
<i>Presidential Election Process</i>	6
<i>New Database Offerings</i>	7
<i>Book Orders Sought</i>	7



FROM THE INTERIM DEAN

Last October, **Dean Christina Baum** left Lamar University for the Library Director position at Southern Connecticut State University's Hilton C. Buley Library. The university is less than three miles from downtown New Haven, Connecticut and a mere 80 miles from New York City. We certainly wish her well with her new endeavor. In December, Dr. Baum appeared on a WNPR radio program for Connecticut Public Radio entitled, "*The Future of Libraries*." She was heard in studio with Mr. Bob Farwell, Executive Director of Otis Library, the central facility of the Norwich, Connecticut public library system. The program can be heard [here](#).

I have agreed to serve as Interim Dean while a national search for her replacement has begun. The search committee is being led by Dean Jack Hopper of the College of Engineering. To complicate matters, the **Assistant Dean for Library Services, Jan Kemp**, accepted an administrative position with the University of Texas at San Antonio Library just a few weeks

prior to Dean Baum's departure. She is the Assistant Dean for Public Services at her new institution and we wish her well also. Despite the unfortunate back-to-back turnover of the two key library administrators, library faculty and staff have endeavored to maintain uninterrupted normalcy of service and instructional operations.

The library is looking at several projects in the spring semester. The university's Writing Center, currently located in the Maes Building, will ultimately migrate to the first floor of the library. Reference librarians have been busily weeding a portion of the print reference collection to open up a suitable space for the transplantation of the center, which will still be administered through the Department of English and Modern Languages in the College of Arts and Sciences. Also this spring, the library is doing an analysis of its collection through an ExxonMobil grant-funded subscription to OCLC's WorldCat Collection Analysis. Peer group

libraries will be established and studies will be done to determine our comparative strengths and weaknesses as well as identifying unique holdings.

Finally, much of the late fall and early spring semester has been occupied by efforts to provide library support for HEH (Higher Ed Holdings) Academic Partnerships, which are completely remote 18 month master's degrees offered through the College of Education and Human Development. These degrees are marketed by commercial interests to teachers already in the field, and coordinated through partnering ISDs around the state. Librarians have met to examine the courseware and to plan for the best way to offer distance library service in support of these new and exciting graduate programs, which are quickly swelling university enrollment.

David Carroll
Interim Dean of Library
Services
david.carroll@lamar.edu

PLEASE GIVE TO THE LIBRARY

To donate to the library, please print a gift form from <http://dept.lamar.edu/advancement/advweb/giftform.asp>. On the form, please note the library as the beneficiary. Mail your donation and the completed form to:

Lamar University Advancement
P. O. Box 10011
Beaumont, TX 77710-0011

The library is truly the heart of the campus. Your gift will help meet the informational needs of future students and faculty. Thank you!

DIGITAL DISCOVERY 2008

On March 27, 2008, the Dutch science and health publisher, Elsevier, sponsored a one day conference entitled Digital Discovery 2008 at the UT School of Nursing building in Houston's Texas Medical Center. The conference was facilitated by Rice University's Fondren Library and the Houston Academy of Medicine – Texas Medical Center. Representatives from Elsevier, Rice University, the Texas Academy of Medicine, the UT School of Health Information Sciences, the University of Houston, and the NASA Johnson Space Center discussed changing methods of scholarly communication. With recent open access announcements within the National Institutes of Health (NIH) and the Arts & Sciences faculty of Harvard University, the conference took on an even added significance.

The 125+ year old company, Elsevier, with their persistent 30% markup in journal subscriptions, was almost viewed as the “fox in the open access henhouse” for these discussions. To their credit, they continue to keep dialogue open with meetings such as these in their “Library Connect” programs. The company's founding motto, after all, is *Non Solus* (not alone). And, indeed, they have made some concessions to the open access journal movement in recent years, but they are still quite vested in their traditional model. They choose, instead, to

concentrate on online added value. Neils Weertman of Elsevier gave a demonstration of the power of Scopus, the world's largest abstracting & indexing (A&I) citation database of research materials and quality web sources. The database includes citations from more than 15,000 peer-reviewed journals from more than 400 publishers, including over 1,200 open access journals.

Other presenters and panelists at the conference seemed far less hesitant to talk about real changes in scholarly methods. In a reprise of his Technology, Entertainment, Design (TED) talk from 2006, Richard Baraniuk of Rice University's Connexions Project spoke about the startling affect worldwide of open access textbooks. Charles W. Bailey, Jr. of the University of Houston Libraries, spoke about his numerous digital projects, including his seminal *PACS Review*, aka *Public-Access Computer Systems Review*, which debuted in 1989. The now defunct journal was published long before there was any real thought about open access publication. Lisa Spiro of Rice University's Digital Media Center talked about her forays into digital scholarship in Virginia and the use of new digital tools in Humanities scholarship. One of these tools, Zotero, is a free, Firefox-based application developed by the George Mason University Center for History and New Media.

In a major publishing announcement following the conference, it was revealed that John Tagler had been named as Vice-President and Director of the Professional & Scholarly Division of the Association of American Publishers (AAP). Tagler was a 30 year veteran with Elsevier and a participant at the Houston conference.

David Carroll
Interim Dean of Library Services
david.carroll@lamar.edu

The 125+ year old company, Elsevier, with their persistent 30% markup in journal subscriptions, was almost viewed as the “fox in the open access henhouse” for these discussions.

Overdue Notices via Email

The Gray Library is now sending Library overdue notices by email.

As of this month, Lamar State College-Orange students will also be receiving email notices for overdue materials.

Email will allow Gray Library patrons to return their materials as they become due and avoid any fine if returned within three days of the due date. The grace period is allowed traditionally for postal mail notices and will be kept in place in order to accommodate patrons who use email

communication with the Library.

If you suspect that you are not receiving email notices and wish to do so, check with the Circulation Desk in the Library lobby or call 409-880-8134 to verify that we have your correct addresses.

Patrons who do not have an email address in their Library record will receive their notices via U.S. Postal Service.

Virginia Allen
Systems Coordinator
Virginia.allen@lamar.edu

WHAT'S HAPPENING

NEW FACES



ELLEN HOWARD joined the Mary and John Gray Library in January as a library assistant in the library's Cataloging Department.

Prior to joining the library's staff, Ellen worked for the City of Beaumont in the Public Library System. While an assistant at the Theodore Johns Branch Library, she worked in various areas, including Circulation and Children's.

An East Texas native, she is a 1996 graduate of Lamar University and holds a Bachelor of Arts degree in English.

NATIONAL LIBRARY WEEK

This year marks the fiftieth anniversary of National Library Week.

Origins of the celebration go back to 1954 when researchers noted Americans were reading less and spending more time (and money) on televisions, radios, and musical instruments. The National Book Committee was founded by the American Library Association and American Book Publishers Association. Three years later National Library Week was created with the intention to raise awareness, motivate people to read and thus use their libraries. The first National Library Week was celebrated in March of 1958 using the theme "Wake Up and Read."

President Dwight D. Eisenhower issued a proclamation dated March 15, 1958 declaring March 16-22 National Library Week. He asked that it "be a time for the appraisal of community needs for library services

and of the means for meeting them, for encouraging the development of a better-read, better-informed citizenry, and for rededication to that fine public service that has always been characteristic of the libraries of America" (72 Stat.c29). Since 1958 National Library Week has become an annual celebration continued by the American Library Association.

In connection with National Library Week, April 15 is National Library Workers Day, a day for library staff, users, administrators, and Friends groups to recognize contributions made by all library workers.

This year's theme is "Join the Circle of Knowledge @ Your Library."

Theresa Hefner-Babb
Documents Librarian
theresa.hefner-babb@lamar.edu

IN BRIEF

The Lamar University Staff Awards were held earlier this year and several library staff members received service awards, including:

PAUL KLINE, computer lab technician, 5 years.

FAY SANDS, library supervisor, 10 years.

QUINN WOLTERS, library associate, 15 years.

JANIE ALVARADO, executive assistant, 25 years.

KIM WILEY, web support analyst, received a Distinguished Staff Award.

Congratulations to everyone.

KIRK SMITH, formerly a library associate in circulation, now is library supervisor-night.

BRYAN MCCONNELL, formerly a library associate in the reference department, now is a library specialist.

Assistant Professor **CARMEN DOERING** has been named interim electronic resources librarian.

Associate Professor **SARAH TUSA**, coordinator of collection development and acquisitions, and Assistant Professor **TRINA NOLEN**, distance education librarian, attended the ALA mid-winter conference in Philadelphia.



Library Wassail
December 2007



IN THE LIBRARY

IN BRIEF CONT.

Assistant Professor and Systems Coordinator **VIRGINIA ALLEN** has been appointed to the Bylaws Committee of the South Central Unicorn Users Group. This is a SirsiDynix regional users group that currently covers the states of Texas, Louisiana, Arkansas, Oklahoma, New Mexico, and Arizona.

The Art Museum of Southeast Texas named **ALLEN** as its volunteer of the year. She attended the annual "LUV Those Volunteers" reception given by the Beaumont Junior League in February.

Assistant Professor **THERESA HEFNER-BABB**, government documents librarian, was recognized for 350 volunteer service hours at the McFaddin Ward House in January.

HEFNER-BABB also published a book review of *The Civil War Almanac* in the February issue of *Choice*. She also was elected Family Readiness Group Leader for the 373d Combat Sustainment & Support Battalion of the U.S. Army Reserve here in Beaumont in October.

KIM WILEY was selected to participate in the 2008 Texas Accelerated Library Leaders (aka TALL Texans) Institute this sum-

mer. Kim is the third member of the library faculty and staff to be recognized with this honor by the Texas Library Association.

VIRGINIA ALLEN and **JON TRITSCH** presented the "E-Reserves Through Reserve Book Room" program at the Sirsi/Dynix Superconference in Detroit on April 6, 2008.

SARAH TUSA was selected to serve on the Texshare Communications Working Group and the Employee Campaign Steering Committee.

DAVID CARROLL, **KAREN NICHOLS**, **JON TRITSCH**, **VIRGINIA ALLEN**, **JENNIFER MARCANTEL**, **SARAH TUSA**, **SHERRI FITZGERALD**, and **KIM WILEY** attended the Texas Library Association Annual Conference in Dallas, April 15-19, 2008.

SHERRI FITZGERALD is chair-elect for the TLA Library Support Staff Round Table for 2008-2009.

KAREN NICHOLS is chair-elect for the TLA Reference Round Table for 2008-2009.

Jenny Narkiewicz

LIBRARY COURSE OFFERINGS

The Gray Library offers LIBR 1101, a one-credit hour course that instructs students in the process of research. The course meets one day a week and provides students with hands-on experience. The emphasis is not just on using the Gray Library but information sources of all types.

The objectives of the course include: enable students to understand their information needs, instruct students to know how and where to search for information, provide students with principles with which to evaluate information, ensure that students can accomplish specific purposes with their research, and help students understand the ethical and

legal uses of information.

The course is taught by library faculty and allows students to work with that faculty member on a long term basis. We will offer one online section during Summer III and five sections in Fall 2008, with one section offered through WebCT.

If the thought of using the library or doing a research paper frightens you, check us out in the Fall. For more information, contact Karen Nichols, library instruction coordinator, by phone at 880-8131, by e-mail at karen.nichols@lamar.edu, or in person at GL 103.

Karen Nichols,
Library Instruction Coordinator



"Classic" A book which people praise but don't read.

Mark Twain

UNDERSTANDING THE PRESIDENTIAL ELECTION PROCESS



Primaries, caucuses, delegates, super delegates, conventions...these are all terms that have been in the news the past few months and will remain until November 4 when the president is elected. The Internet has a variety of resources on this topic the following come from government agencies.

Federal Election Commission

<http://www.fec.gov>

Agency that oversees campaign financing.

Electoral College

<http://www.archives.gov/federal-register/electoral-college/>

Offers sections on FAQs, 2008 election, how electors vote, Electoral College calculator, teaching resources, historical elections results, and voting resources.

Learn about Elections and Voting – USA.GOV

<http://www.usa.gov/Citizen/Topics/Voting/Learn.shtml>

List of resources includes categories of general information, Electoral College, educational materials, election history, elected officials and candidates, legislation and reform, and organizations and agencies.

Kids Guide to the Election Process – Ben’s Guide to U.S. Government

<http://bensguide.gpo.gov/9-12/election/>

Offers a step by step look at how the President is elected with sections on Primary Elections and General Elec-

tions.

Jefferson County, Texas Voter Registration

<http://www.co.jefferson.tx.us/voter/voter.htm>

Offers links to forms to register to vote or do an address change if you have moved within the county. It also offers the option of volunteering to help with elections as a poll worker. Note there are registration deadlines prior to an election.



Theresa Hefner-Babb

Documents/Reference Services Librarian

theresa.hefner-babb@lamar.edu

FEDERAL ELECTION COMMISSION

<http://www.fec.gov>

ELECTORAL COLLEGE

<http://www.archives.gov/federal-register/electoral-college/>

LEARN ABOUT ELECTIONS AND VOTING

<http://www.usa.gov/Citizen/Topics/Voting/Learn.shtml>

KIDS GUIDE TO THE ELECTION PROCESS

<http://bensguide.gpo.gov/9-12/election/>

Jefferson County, Texas Voter Registration

<http://www.co.jefferson.tx.us/voter/voter.htm>

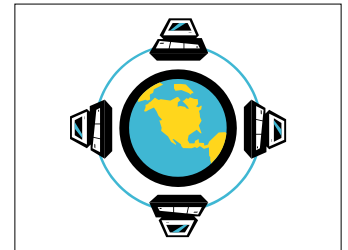
NEW DATABASE OFFERINGS

In the past semester, the Mary and John Gray Library began subscriptions to a few more databases, including INFORMS Online, IOP Science, and SportDiscus.

INFORMS Online provides full-text articles from twelve journals published by

management—include titles such as *Decisions Analysis*, *Management Science*, *Operations Research*, and *Organization Science*. More information on INFORMS journals can be found online at <http://www.informs.org/Pubs/>.

1985. SportDiscus is available through the Ebscohost platform, so the interface should be familiar to researchers who have used other Ebscohost databases such as Academic Search Complete and Health Source: Nursing Academic.



Electronic Resources News

To Access Databases

1. Start at the library's home page: <http://library.lamar.edu>.
2. Click the "Find Articles and More" link.
3. After signing in, there are four options: list databases by subject area, list all databases, find a full-text journal and search multiple databases at once.
4. Select option 2.

the Institute for Operations Research and the Management Sciences. The backfile covers content for all twelve journals back to 2001. The journals—focusing on topics related to operations and

IOP Science, a product of the Institute of Physics, provides access to several full-text journals covering topics related to physics. The titles included in IOP Science can be found online at <http://tinyurl.com/4uxpy4> and a user's guide is available at <http://tinyurl.com/4ogdy6> (both links are .pdf downloads).

SportDiscus is a research database for topics related to kinesiology, physical education, and sports science. Researchers can use SportDiscus to find citations from magazines, peer-reviewed journals, books, conference proceedings, and dissertations. Full-text articles are available from over four hundred magazines and journals with some full-text content going as far back as

These new databases and other online research tools are currently available through the "Find Journal Articles and More" link on the library's home page at <http://library.lamar.edu>. Research assistance is available from the library's reference department at 880-1898.

Jeff Lacy
Interim Head of Reference
jeff.lacy@lamar.edu

Book Orders Sought

Attention Faculty

Your library book representatives would like your input on what books to order for your departments.

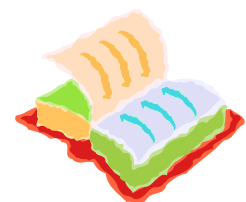
If you are teaching a new course or updating an old one let us know. If you plan on distributing a reading list for your class please send us a copy so we can check the collection and make sure that we have a copy on the shelf.

Each department has a book representative and a library liaison if you do not know who this person is call the Reference Desk 880-

1898 and we can look the information up for you.

If you want materials to be available for the Fall semester we need your orders soon.

We appreciate any input you can provide as we add materials to our circulating collection.



From the Stacks
Spring 2008
Vol. 5, #2

Co-editors:

Theresa Hefner-Babb
Jeff Lacy

Newsletter Committee:

Theresa Hefner-Babb, chair
David Carroll
Jeff Lacy
Jenny Narkiewicz
Carmen Doering



LAMAR UNIVERSITY

A Member of The Texas State University System

Mary and John Gray Library
Lamar University
4400 MLK Boulevard
P. O. Box 10021
Beaumont, TX 77710
Phone: 409-880-1898
Fax: 409-880-2218
E-mail: refdesk@lamar.edu



*Seventy million books
in America's libraries,
but the one you want to
read is always out.*

Tom Masson



LIBRARY HOURS—SUMMER 2008

Regular Hours (Summer)

Monday through Thursday	7:30 a.m.-12:00 a.m.
Friday	7:30 a.m.-6:00 p.m.
Saturday	10:00 a.m.-7:00 p.m.
Sunday	2:00 p.m.-12:00 a.m.

Archives/Special Collection Hours

Monday through Thursday	9:00 a.m.-6:00 p.m.
Friday	8:00 a.m.-5:00 p.m.

Special Hours

May 10	CLOSED-Commencement
May 11	2:00 p.m.-9:00 p.m.
May 12-15	7:30 a.m.-9:00 p.m.
May 16	7:30 a.m.-6:00p.m.
May 17	10:00a.m.-7:00p.m.
May 18	2:00 p.m.-9:00p.m.
May 19-22	7:30 a.m.-9:00 p.m.
May 23	7:30 a.m.-6:00 p.m.
May 24-26	CLOSED-Memorial Day
May 27-29	7:30 a.m.-9:00 p.m.
May 30	Regular hours resume
July 4	CLOSED - Fourth of July
August 16	CLOSED - Commencement